

Safeguarding Children

Policy

Safeguarding is everyone's responsibility:

Child protection is a part of safeguarding and promoting welfare. This refers to the activity which is undertaken to protect specific children who are suffering or are at risk of suffering significant harm. As adults and/or professionals or volunteers, everyone has a responsibility to safeguard children and promote their welfare.

Safeguarding and promoting the welfare of children - and in particular protecting them from significant harm - depends upon effective joint working between agencies and professionals that have different roles and expertise.

Individual children, especially some of the most vulnerable children and those at greatest risk of social exclusion, will need co-ordinated help from health, education, children's social care, and quite possibly the voluntary sector and other agencies, including youth justice services.

For those children who are suffering, or at risk of suffering significant harm, joint working is essential, to safeguard and promote welfare of the child(ren) and - where necessary - to help bring to justice the perpetrators of crimes against children. All agencies and professionals should:

- ✓ be alert to potential indicators of abuse or neglect;
- ✓ be alert to the risks which individual abusers, or potential abusers, may pose to children;
- ✓ share and help to analyse information so that an assessment can be made of the child's needs and circumstances;
- ✓ contribute to whatever actions are needed to safeguard and promote the child's welfare;
- ✓ take part in regularly reviewing the outcomes for the child against specific plans; and
- ✓ work co-operatively with parents unless this is inconsistent with ensuring the child's safety.

Definitions of abuse and neglect:

Abuse and neglect are forms of maltreatment of a child. Somebody may abuse or neglect a child by inflicting harm, or by failing to act to prevent harm. Children may be abused in a family or in an institutional or community setting; by those known to them or, more rarely, by a stranger. They may be abused by an adult or adults or another child or children.

Physical abuse

Physical abuse may involve hitting, shaking, throwing, poisoning, burning or scalding, drowning, suffocating, or otherwise causing physical harm to a child. Physical harm may also be caused when a parent or carer fabricates the symptoms of, or deliberately induces illness in a child.

Emotional Abuse

Emotional abuse is the persistent emotional maltreatment of a child such as to cause severe and persistent adverse effects on the child's emotional development. It may involve conveying to

children that they are worthless or unloved, inadequate, or valued only insofar as they meet the needs of another person. It may feature age or developmentally inappropriate expectations being imposed on children. These may include interactions that are beyond the child's developmental capability, as well as overprotection and limitation of exploration and learning, or preventing the child participating in normal social interaction. It may involve seeing or hearing the ill-treatment of another. It may involve serious bullying causing children frequently to feel frightened or in danger, or the exploitation or corruption of children. Some level of emotional abuse is involved in all types of maltreatment of a child, though it may occur alone.

Sexual Abuse

Sexual abuse involves forcing or enticing a child or young person to take part in sexual activities, including prostitution, whether or not the child is aware of what is happening. The activities may involve physical contact, including penetrative (eg: rape, buggery or oral sex) or non-penetrative acts.

They may include non-contact activities, such as involving children in looking at, or in the production of, pornographic material or watching sexual activities, or encouraging children to behave in sexually inappropriate ways.

Neglect

Neglect is the persistent failure to meet a child's basic physical and/or psychological needs, likely to result in the serious impairment of the child's health or development. Neglect may occur during pregnancy as a result of maternal substance abuse. Once a child is born, neglect may involve a parent or carer failing to provide adequate food and clothing, shelter including exclusion from home or abandonment, failing to protect a child from physical and emotional harm or danger, failure to ensure adequate supervision including the use of inadequate care-takers, or the failure to ensure access to appropriate medical care or treatment. It may also include neglect of, or unresponsiveness to, a child's basic emotional needs.

Staff awareness

Lauren Hogg is your designated safeguarding lead she is your first port of call if you need to report a safeguarding issue if she is not available to talk to in person you can call her on 07715925357.

Kacey Dart is your deputy designated safeguarding lead if Lauren Hogg is not available to talk to you can contact Kacey on 07764807724.

All staff will be made aware of this policy as part of their initial induction process and there will be regular briefings and updates for all staff.

All staff and volunteers will be fully trained in Safeguarding and Child Protection in accordance with the Local Authority requirements.

Reviewing the Policy and Procedure

This policy and procedure will be reviewed every year, this will include checking telephone numbers, accuracy of personnel details, and any updates required by a change in local or national policy.

Procedures

What to do if you have concerns about a child

You may have concerns about a child because of something you have seen or heard, or a child may choose to disclose something to you. If a child discloses information to you:

- ✓ Do not promise confidentiality, you have a duty to share this information and refer to Children's Social Care Services.
- ✓ Listen to what is being said, without displaying shock or disbelief.
- ✓ Accept what is said.
- ✓ Reassure the child, but only as far as is honest, don't make promises you may not be able to keep eg: *'Everything will be alright now'*, *'You'll never have to see that person again'*.
- ✓ Do reassure and alleviate guilt, if the child refers to it. For example, you could say, *'You're not to blame'*.
- ✓ Do not interrogate the child; it is not your responsibility to investigate.
- ✓ Do not ask leading questions (eg: Did he touch your private parts?), ask open questions such as *'Anything else to tell me?'*
- ✓ Do not ask the child to repeat the information for another member of staff.
- ✓ Explain what you have to do next and who you have to talk to.
- ✓ Take notes if possible or write up your conversation as soon as possible afterwards.
- ✓ Record the date, time, place any non-verbal behaviour and the words used by the child (do not paraphrase).
- ✓ Record statements and observable things rather than interpretations or assumptions.

Whatever the nature of your concerns, discuss them with your manager or designated member of staff. See the diagram on the next page for the process to follow.

If you still have concerns, you or your manager should refer to:

Doncaster Children's Services Trust

Go to www.doncasterchildrenstrust.co.uk and click on the 'Report a concern about a child' link to complete the form.

Alternatively:

Phone Number: 01302 737777

Out of Hours: 01302 796000

Urgent child protection concerns

If you are worried about a child that might be at immediate risk of harm or if the situation is an emergency do not wait to contact the LADO and contact either Children's Services and/or the Police straight away.

The LADO can then be contacted after the child is safe.

Children's Services:

Referral and Response Team

Office hours: 01302 737777

Out of hours: 01302 796000

Police:

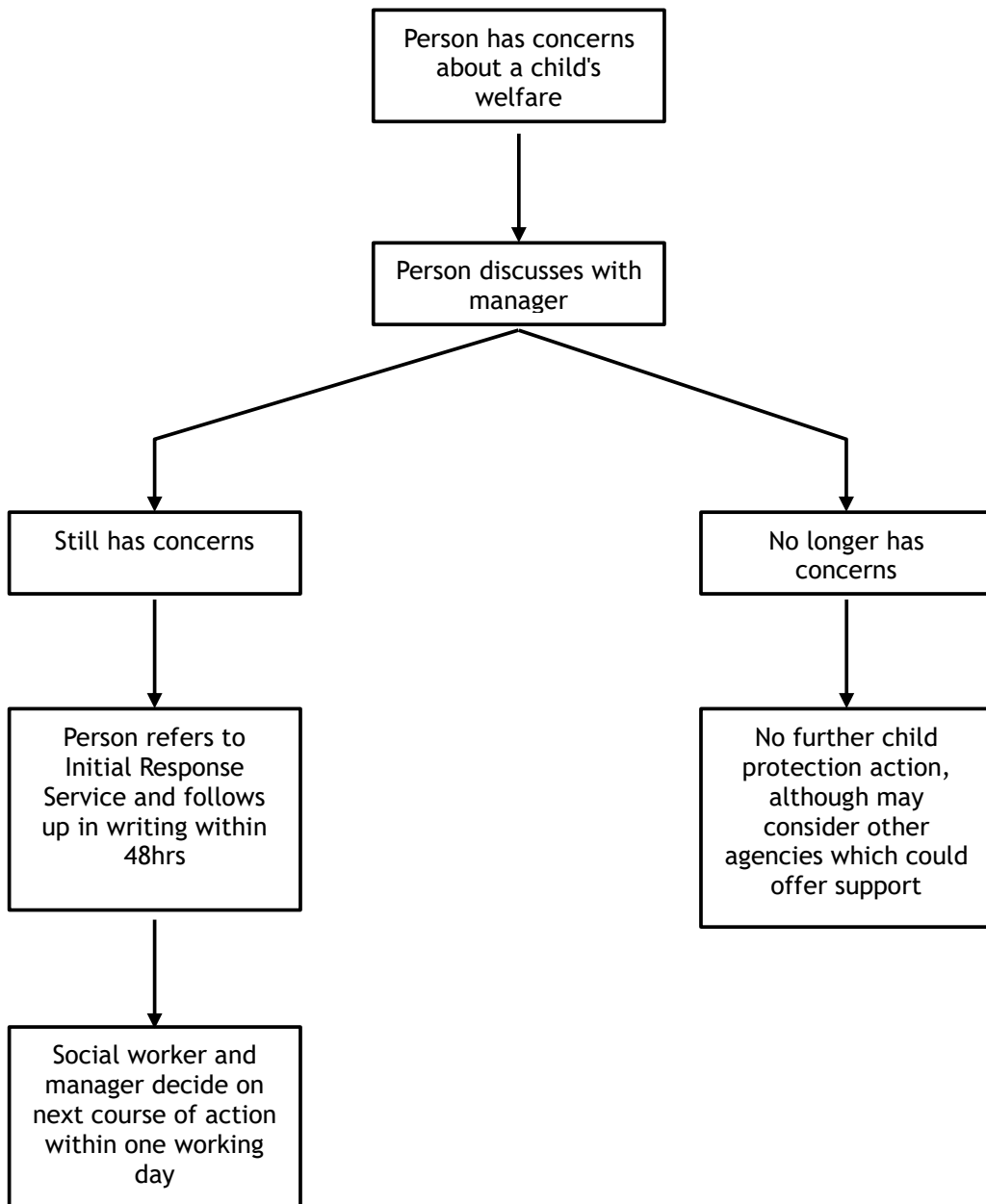
Phone 101 or in an emergency 999.

What information will you need when making a referral?

You will be asked to provide as much information as possible. Such as the child's full name, date of birth, address, school, GP, languages spoken, any disabilities the child may have, details of the parents. Do not be concerned if you do not have all these details, you should still make the call.

You should follow up the verbal referral in writing, within 48hrs

Process Chart Where There Are Concerns About A Child's Welfare



Allegations Involving a Members of Staff / Volunteer

Future Pathways CIC are committed to having effective recruitment and human resources procedures, including checking all staff and volunteers to make sure they are safe to work with children and young people. Where appropriate, key staff involved in recruitment processes will undertake Safer Recruitment Training.

However, there may still be occasions when there is an allegation against a member of staff or volunteer. Allegations against those who work with children, whether in a paid or unpaid capacity, cover a wide range of circumstances

All allegations of abuse of children by those who work with children or care for them must be taken seriously. All reports of allegations must be submitted within one working day to The Child Protection Officer.

The following procedure should be applied in all situations where it is alleged that a person who works with children has:

- ✓ Behaved in a way which has harmed a child, or may have harmed a child;
- ✓ Possibly committed a criminal offence against or related to a child;
- ✓ Behaved towards a child or children in a way which indicates that he/she is unsuitable to work with children.

The allegations may relate to the persons behaviour at work, at home or in another setting.

Allegations of this nature should be reported to the Local Authority Designated Officer (LADO).

The Local Authority Designated Officer (LADO) is the person who should be notified when it has been alleged that a person who works with children has:

- Behaved in a way that has harmed a child, or may have harmed a child
- Possibly committed a criminal offence against or related to a child
- Behaved towards a child or children in a way that indicates she or he may pose a risk of harm to children.

The LADO may also become involved if:

- A complaint or an allegation is made against a person in relation to his/her work with children or young people, which causes concern about the children or if the person also has another role working with children
- A complaint or an allegation is made against a person in relation to a matter that may indicate that the person may not be suitable to work with children

All organisations providing services for children, including those who provide paid staff or volunteers to work with or care for children should inform the LADO if allegations are made

Keeping Children Safe in Education

Future Pathways have regard to the Keeping Children Safe in Education statutory guidance in relation to safeguarding children. The guidance is included in our staff induction and is readily available to all staff, volunteers, visitors and service users.

Change Record

Date of Change:	Changed By:	Comments:
26/02/2020	LH	
25/09/2020	LH	Policy reviewed and updated with premises move.
03/05/2021	LH	Policy updated in response to LOCYP QA Process
03/08/2022	DG	Policy reviewed and updated.